

San Lorenzo River Through Time

Can you find this sign?

The San Lorenzo River is always changing. Learn how the river's history has shaped Santa Cruz today.

Answer the questions based on what you read.

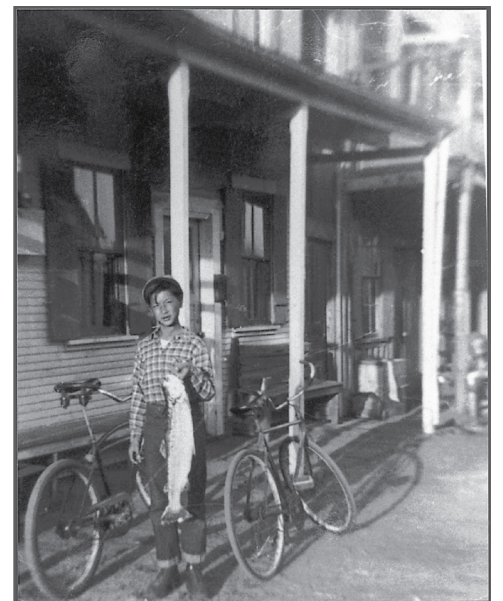
1. When was the major flood that caused the levees to be built? _____
2. How many floods were there in Santa Cruz between 1860 and 1958? _____
3. How long are the levees? _____



Did you know...

that Santa Cruz had a Chinatown? It moved from time to time and the last one was next to the San Lorenzo River until the 1955 flood destroyed it. Illustrated here is Young Lee in Chinatown in 1946 holding a steelhead trout that he caught in the San Lorenzo River.

Color in this drawing and imagine life along the river.



Courtesy *Chinatown Dreams: The Life and Photographs of George Lee*, Capitola Book Company, George Lee Archive.