

## 'Get Outdoors' GO! Program Landmark's Fantabulous Fifth Graders!!!

Look at what we learned during  
The 2008-2009 school year!

### Enviroscape 3D Watershed Model

- 👉 Interactive model teaches about watersheds, erosion, hedgerows, pollution & preventative measures for point source & non-point source pollution problems



### Erosion Experiment

Demonstrates beneficial function of vegetation on the land and importance of erosion prevention for a healthy watershed and water quality

- 👉 Erosion & erosion prevention techniques
- 👉 Bare vs. vegetation vs. dead vegetation vs. terracing techniques
- 👉 Containers placed at angle and "rained" on by watering cans
- 👉 Runoff captured and measured for water and sediment amounts



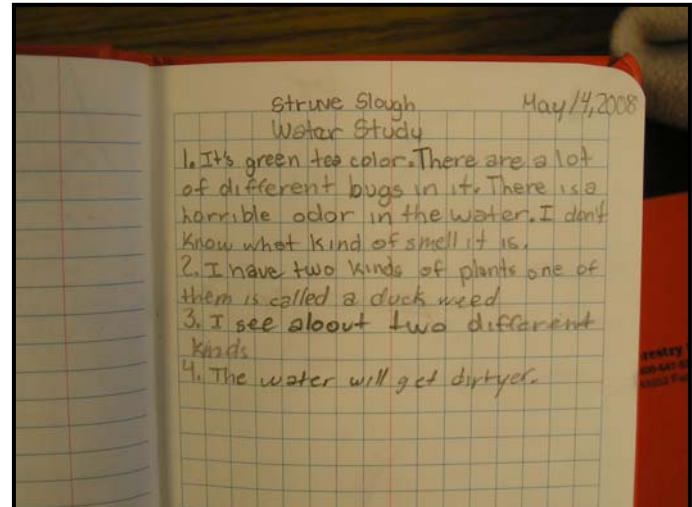
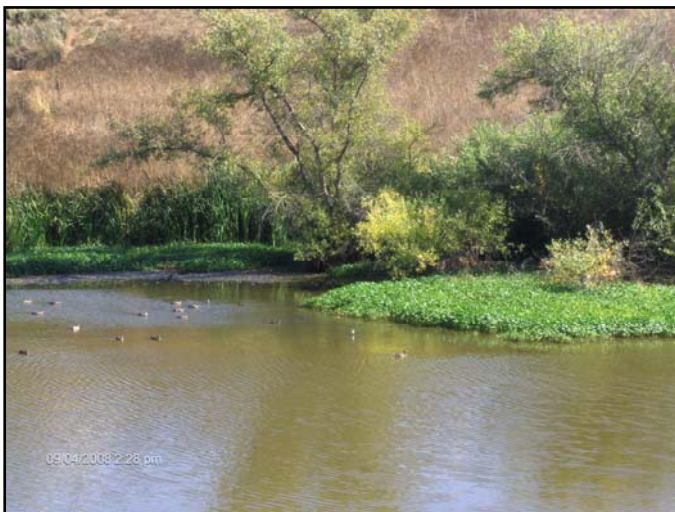
## Barometers

- 👉 Weather and barometric pressure
- 👉 Weather, seasonal changes
- 👉 Winter changes in the slough
- 👉 Tracking changes over time

## Struve Slough Water Study

Rotational stations that included:

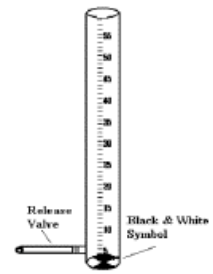
- 👉 Shallow trays of water complete with numerous benthic macro invertebrates (BMI), slough flora (cattails, horsetail, watercress) & BMI ID cards, poster and magnifying glasses
- 👉 Compound microscopes with slough water slides, stereo microscope with caddis fly larvae casing and Petri dish with BMI
- 👉 Shallow trays and a fish tank of water with BMI identification cards.
- 👉 Journal entries were made of observations



## Water Quality Monitoring

Parameters included:

- 👉 Air and water temperature
- 👉 pH
- 👉 Electrical Conductivity
- 👉 Dissolved Oxygen
- 👉 Transparency
- 👉 Stereo microscopes (in class) to study duckweed & ceriodaphnia



## Bacteria Study

- 👉 Bacteria in human bodies and water systems
- 👉 LaMotte coliform bacteria kit, indicates presence/absence of bacteria
- 👉 Test tubes filled & labeled: tap water, aquarium water and Struve Slough water were compared
- 👉 24-hour incubation test results indicate presence of bacteria in slough samples

## West Struve Slough - Field Trip

*Watsonville Wetlands Watch (WWW)*

Students learned about:

- 👉 Local birds
- 👉 Water quality monitoring
- 👉 Wetland habitat
- 👉 Local flora and fauna

